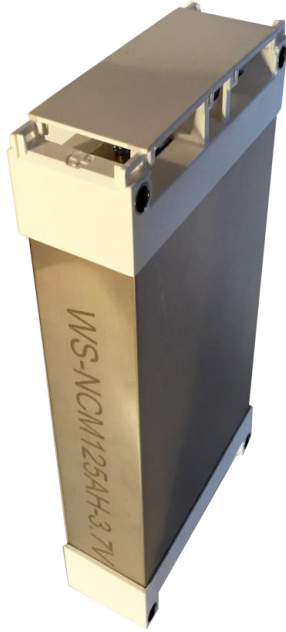
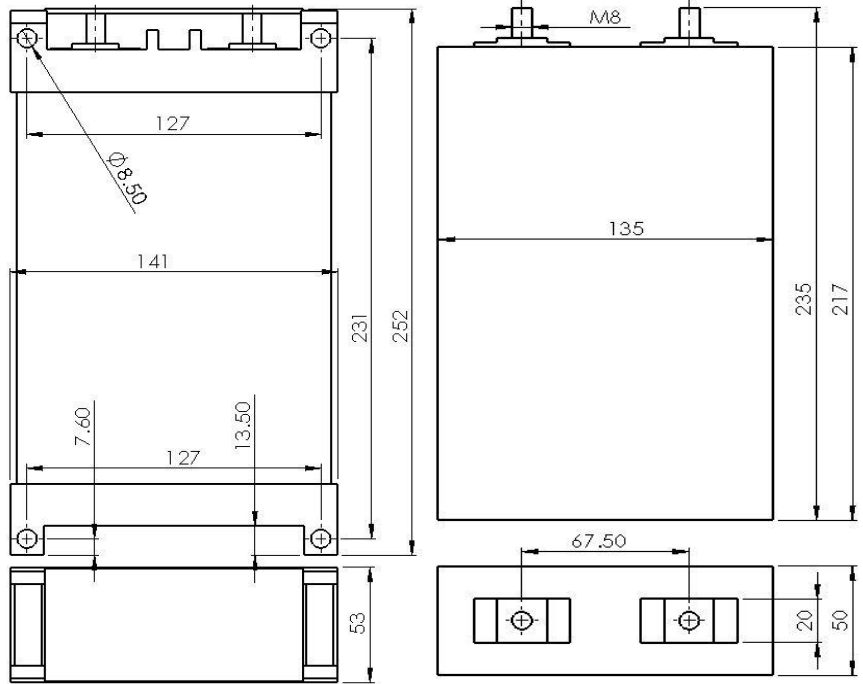


Photo



Drawing



Nominal Capacity		125Ah@0.3C Discharging
Minimum Capacity		125Ah@0.3C Discharging
Nominal Voltage		3.7V
Internal Resistance		≤0.6mΩ
Charging(CC-CV)	Charging Current	0.5C continuous / 1C peak
	Charging Upper Limit Voltage	4.2V
Discharging	Discharging Current	3C continuous / 5C peak
	Discharging Cut-off Voltage	3.0V
Charging Time	Standard Charging	2H
	Quick-acting Charging	1H
Operation Temperature	Charging	0°C~45°C
	Discharging	-20°C~55°C
Weight		2.95Kg
Size / with Plastic Holders		50x135x235mm/ 53x141x252mm
Shell Material		Stainless Steel 304

