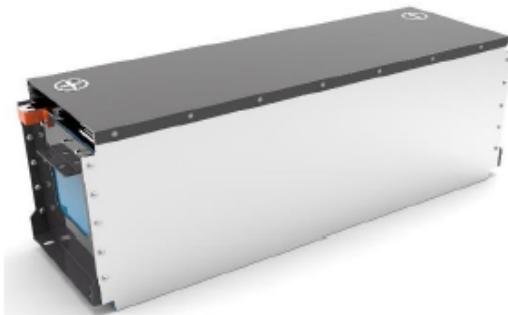


Photo

Advantage

- Low temperature discharge
- Fast charge
- High energy density
- Reasonable design
- maximum use of limited space
- Longer service life
- Less weight
- High rigidity

Specification

Nominal Capacity	235Ah@0.33C Discharging	
Nominal Voltage	25.60V@0.33C Discharging	
Module total energy(0.33C,2.5V~3.65V,25°C)	≥6016Wh	
Configuration	1P8S	
Coulombic efficiency (@25°C, 1C charge to 3.65V,0.05C charge to single cell 3.65V, standing by to target temperature, then 1C discharge)	-20°C	84%
	0°C	89%
	10°C	94%
	45°C	105%
	55°C	110%
Module self discharge rate(60%SoC shipment @25°C)	<1%(1st month)	
SOC operating window range	5%~95%	
Module	Charging Current	1C continuous(≤80%SOC)
	Discharging Current	1.5C continuous(≤70%SOC)
Operation Temperature	Charging	0°C ~ 55°C
	Discharging	-20°C ~ 55°C
Operation Altitude	Up to 3000 meters	
Weight(Kg)	34± 0.3	
Size(mm)	485*183*226	
Module energy density	177 Wh/Kg	
Module cycle life	≥3000(0.5C/1C,5%~95%DOD,25°C)	

Application

Ideal for Electric Vehicles and Electric Storage Systems.