



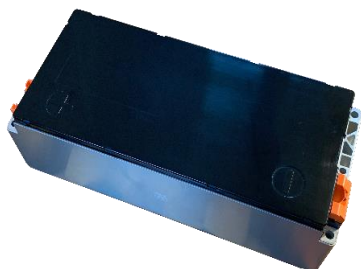
Shenzhen Westart Technology Co.,Ltd.

Add.: 3rd Longcheng industrial Area, Long Gang District,Shenzhen,China,518000

Email: sales@szwestart.com

Web.: www.szwestart.com

Photo



Advantage

- Low temperature discharge
- Fast charge
- High energy density
- Reasonable design
- maximum use of limited space
- Longer service life
- Less weight
- High rigidity

Specification

Nominal Capacity		105Ah@0.33C Discharging
Operating voltage(V)	0°C<T≤55°C	16.8~25.8
	-20°C<T≤0°C	15~25.8
	T≤-20°C	12.6~25.8
Module total energy(0.33C,2.8V~4.3V,25°C)		≥2331Wh
Configuration		1P6S
Coulombic efficiency (@25°C, 1C charge to 4.3V,0.05C charge to single cell 4.3V, standing by to target temperature, then 1C discharge)	-30°C	80%
	-20°C	85%
	-10°C	87%
	0°C	92%
	10°C	94%
	25°C	100%
	50°C	103%
Module self discharge rate(60%SOC shipment)		<3%(1st month)
		<2%(2nd month)
SOC operating range		5%~97%
Module	Charging Current	1C continuous
	Discharging Current	1.5C continuous /4C peak(10 seconds)
Operation Temperature	Charging	-20°C~55°C
	Discharging	-30°C~55°C
Weight(Kg)		11±0.5
Size(mm)		355*151.5*108.5
Module energy density		212Wh/Kg
Module cycle life		≥2000(0.5C/1C,100%DOD,25°C)

Application

Ideal for Electric vehicles